

Climate-Resilient Sexual and Reproductive Health Framework

Background

Climate change threatens human health in multiple ways; the consequences of climate change for sexual and reproductive health and rights (SRHR) are becoming increasingly apparent across the globe.

The direct and indirect negative impacts on sexual and reproductive health and rights:

	Climate Change Effects	SRHR Risks
Direct effects	Increased temperature and heat waves	<ul style="list-style-type: none"> Heat-related illnesses affecting pregnant women, menstrual irregularities, reduced fertility
	Rising air pollution	<ul style="list-style-type: none"> Increased stillbirths, intrauterine growth restriction, congenital disabilities
	Extreme weather events (floods, storms, fires)	<ul style="list-style-type: none"> Disruption of SRHR services, increased maternal and neonatal complications
Indirect Effects	Food insecurity due to climate impacts on crops	<ul style="list-style-type: none"> Malnutrition in pregnant women, maternal anemia, miscarriage risk
	Climate-related displacement and migration	<ul style="list-style-type: none"> Increased exposure to sexual and gender-based violence, barriers to accessing SRHR services
	Economic instability from livelihood loss	<ul style="list-style-type: none"> Increased sexual risk behaviors including transactional sex, higher HIV/STI risk
	Water scarcity and sanitation issues	<ul style="list-style-type: none"> Impaired menstrual hygiene, increased reproductive infections
	Spread of vector borne diseases	<ul style="list-style-type: none"> Maternal illness, stillbirth, low birth weight, miscarriages, congenital abnormalities
	Mental health stress from climate crises	<ul style="list-style-type: none"> Negative effects on sexual desire, reproductive intentions

Applying a climate-resilient approach to the SRH system



Goal of the Framework

The goal of this framework is to **strengthen** the pathways to SRH system and to **protect and improve** the sexual and reproductive health of marginalized communities, particularly women and girls in an unstable and changing climate. It also aims to hold local stakeholders and system accountable and committed to sexual and reproductive rights and responsive to everyone's SRH needs.

Objective of the Framework

- Understand and prepare for additional SRH risks posed by climate variability and change.
- Identify the main health system components that need to be strengthened to build up climate resilience.
- Identify roles and responsibilities to implement this plan.

Framework

Comprehensive sexual and reproductive health and rights (SRHR) are a human right and essential to just and climate-resilient health systems and communities; *people know their challenges and solutions best*. Alongside improving the health of vulnerable populations, it is equally important that health systems—particularly frontline access points, the health workforce, supply chains, and pathways to care —be resilient to any changing climate context, with reliable infrastructure and access to critical health services.

Building climate resilience is a process of strengthening the health system to adapt more effectively to changes, particularly those in health risks resulting from climate change. The process of building resilience occurs by :



Reduced vulnerability (lower exposure and sensitivity to harm, increased adaptive capacity) of women and girls to the climate crisis, particularly its impacts on SRHR.



Strengthening the capacities of local health systems and actors to climate shocks and stressors, particularly for SRHR.



Improved enabling environment for gender-transformative climate action, which integrates SRHR (institutions and communities).

Components of the Climate Resilient Sexual and Reproductive Health Framework

1. Climate Transformative Leadership and Governance

Create a deeper understanding of linkages between climate change and SRH and climate resilient SRH system. Advocacy efforts will focus on ensuring that SRHR aspects are more clearly defined and prioritized in government's climate and health related plans, policies, guidelines across all three levels of governance, including through the introduction of legal provisions to safeguard the continuity of SRHR services in both every day and climate risk context. Collaboration with community and partner organizations to promote and influence inclusion of SRHR services including safe abortion into climate action and vice versa.

2. Women-led climate movement building and agency building

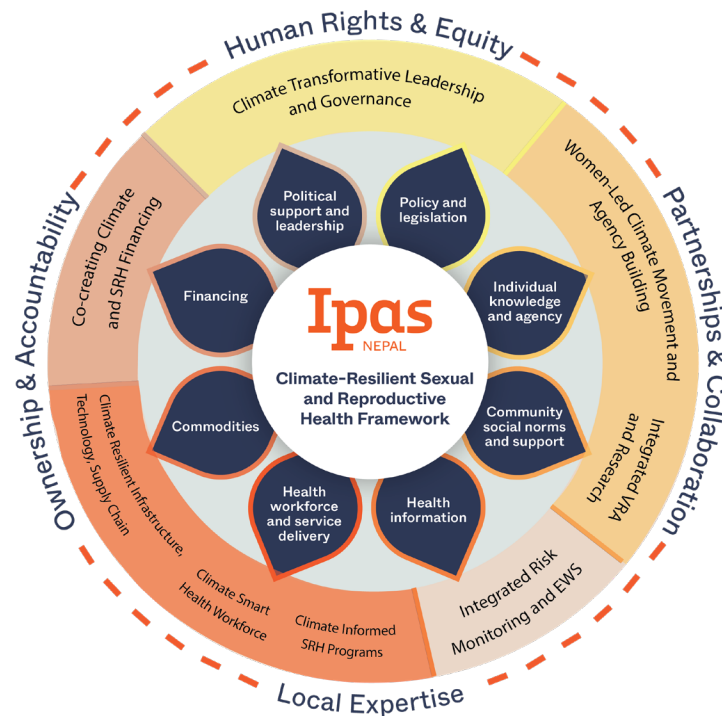
Invest in developing individual knowledge and agency of people, community leadership and a network of organizations working on climate change and SRHR. Women and girls will have accurate information and understanding to inform their reproductive health decisions and can act independently to make their own choices even in unstable or changing climate context. Advance policy and legal reforms that foster a more enabling environment for SRHR, through community engagement and building local leadership.

3. Integrated vulnerability, risk, and capacity assessment and Research

Vulnerability, risk, and capacity assessment will be used to identify, collect, predict and document data on climate vulnerabilities, risk and SRH; assess the capacity of health systems to manage those vulnerabilities and risks; and use the findings to define appropriate protective measures including responses to current and emerging reproductive health needs. Promote evidence from other organizations to enhance understanding and drive informed action across the organisation, SRHR networks, and government systems.

4. Integrated Risk Monitoring and Early Warning System

Strengthen climate-informed early warning systems (EWS), integrated monitoring and progress tracking, including environmental impacts, and communication to inform timely action. Integrated risk monitoring seeks to provide a comprehensive view of health risks by leveraging real-time information.



SRHR IMPACTS ON WOMEN AND GIRLS

- Increased cases of GBV
- Unintended Pregnancy and Unsafe Abortions
- Maternal mortality and Morbidity
- Destruction of SRH and WASH infrastructure
- Interrupted SRH Services

CHANGES OF CLIMATE SYSTEM

- Extreme Weather Events
- Increased Temperature and Erratic Rainfall
- Change in Ocean Current
- Change in Hydrological Cycle
- Melting Glaciers

DRIVERS OF CLIMATE CHANGE

- Greenhouse Gases, Land Use Change and Deforestation

5. Climate-Informed SRH Programs

Utilise the information gathered through assessments, research, and monitoring to inform the design and delivery of climate resilient SR health programs. Emerging climate and environmental risks to health call for continuous updates to existing health programs and management system to strengthen their response capacity with adequate, effective, and sustainable interventions. Quality SRH services should be free of stigma, grounded in human rights and ensure privacy and confidentiality and are available through a trained and supported health workforce that meets clinical and service delivery standards.

6. Climate-smart health workforce

Adopt a capacitystrengthening approach to climate-resilient health systems, focusing on building both the skills of the health workforce and the institutional ability to respond to climate-related health challenges. By equipping health workers with the knowledge and tools to act on climate and health issues and strengthening organizational systems to implement climate-responsive interventions, we aim to ensure that health services remain effective, sustainable, and resilient in a changing climate.

Climate resilient infrastructure, technology, supply chain

The health infrastructure and technology will be built in such a way that it can withstand any kind of situation. Ensure the availability and supply of climate resilient health infrastructure, technology and commodities so that local systems are committed to having commodities available at the right place, at the right time, in the right quantity and in the proper condition in normal and unstable conditions.

7. Correlating climate and SRH financing

Identify and access sustainable financing to support climate change and SR health interventions and propose ensuring access to health specific funding and financing mechanisms, including climate change funding streams; and funding allocated for health-determining sectors. Financing for the climate and SRH includes mechanisms that ensure resilient, affordable, equitable access to SRH care across the entire health system. Promote local ownership of programs through co-creation with local and other levels of governments and community engagement in planning and implementing climate and SRH programs resulting in co- benefits.



Ipas Partners for
REPRODUCTIVE JUSTICE
NEPAL

PO Box: 11621

 Ipas Nepal Bhagwati
Marg- 1, Naxal Kathmandu

 Tele: +977-1-4523101,
+977-1-4523102

 ipasnepal@ipas.org

 www.nepal.ipas.org